

NETWORK MAINTENANCE

A living network of connected interfaces where
ownership becomes care—each action ripples through
the system, revealing how attention and
responsibility sustain both art and the networks
that bind us.

Website: <https://network-maintenance.com>

Network Maintenance is a series of networked wall-mounted interfaces that explore the relationship between ownership, care, and collective responsibility. Each piece consists of a minimalist custom construction housing a display and various analog controls. The works function as nodes in an interconnected system where each owner's engagement directly influences the vitality of the entire network.

The interface requires regular interaction from its owner—pressing buttons in specific sequences or responding to shifting patterns. This transforms the traditional passive role of art ownership into active participation in a living system. Without proper care, individual pieces begin to show signs of decay, affecting both their own state and the broader network of works in the series.

QUANTUM PRINCIPLES

Drawing inspiration from quantum mechanics, the artwork embodies principles of entanglement and superposition. Just as entangled quantum particles instantaneously influence each other regardless of distance, each owner's actions create ripple effects throughout the entire network of installations.

The system maintains multiple potential states simultaneously—a quantum superposition—that "collapses" into specific configurations only when observed and interacted with.

NETWORK DESCRIPTION

Each interface displays various visual states that reflect the network's health metrics: stability, responsiveness, and connectivity. Owners must maintain core resources—compute, bandwidth, and memory—through their interactions, directly affecting both their individual node and the collective ecosystem.

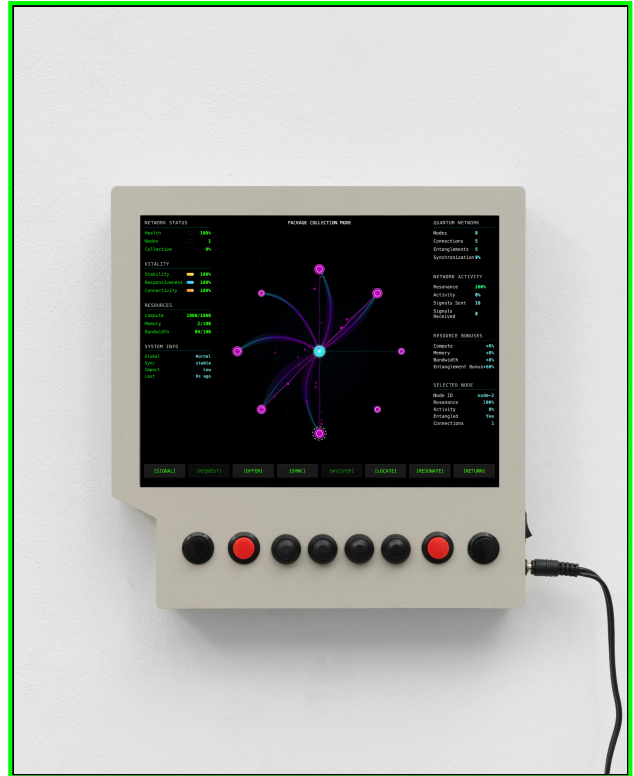
The abstract compositions generated on each display visualize these complex relationships, creating a representation of the network's overall health and interconnectedness.

THEMES

The work critically examines themes of responsibility, community, and the relationship between individual actions and collective outcomes. It suggests our interconnectedness may be as fundamental as the quantum fabric of reality itself.

"Network Maintenance" invites reflection on the broader ecological and social webs that sustain us, highlighting how attentiveness, care, and responsibility toward unseen networks form essential components of our shared human experience.

> The Devices



rdware, software

TECHNICAL SPECIFICATIONS

DIMENSIONS

250 × 250 × 45 mm

WEIGHT

850g approx.

MATERIALS

Custom PLA housing, mounting plate, custom hardware

DISPLAY

10.4" IPS LCD, 1024×768px resolution

HARDWARE

Raspberry Pi 4 (4GB RAM), custom PCB, buttons

POWER

12V/2A, universal 100–240V adapter included

CONNECTIVITY

Wi-Fi 802.11ac (2.4/5GHz), Bluetooth 5.0

EDITION

Limited edition, signed and numbered

> System Mechanics



Actions

HEAL · SCAN · CLEAN ·
BOOST
REPAIR · SYNC · SHARE ·
DEBUG · ...



Core Resources

Compute · Memory ·
Bandwidth
Resonance · Energy



Vitality Metrics

Stability ·
Responsiveness
Connectivity · Health

OWNERSHIP & CARE

Each device demands regular interaction. Without it, the interface drifts into decay and eventually collapses.

COLLECTIVE RESPONSIBILITY

No device stands alone. Neglect of one weakens the entire network and destabilizes the whole system.

QUANTUM ENTANGLEMENT

Every action resonates across the network. The system holds many states until interaction causes it to collapse into form.

HEALTH METRICS

Vitality appears as stability, responsiveness, and connectivity—signals of whether the system thrives or fails.

RESOURCES

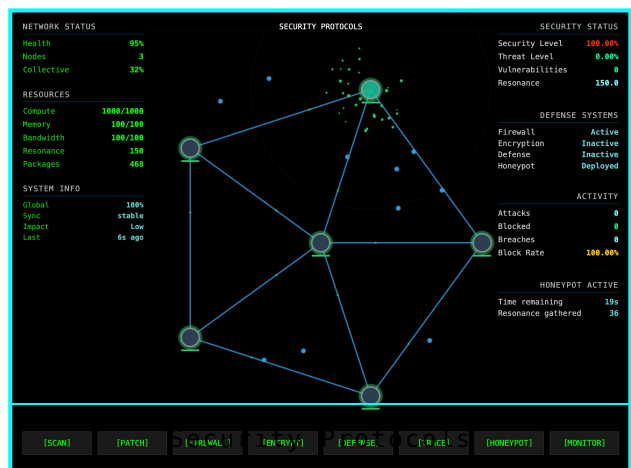
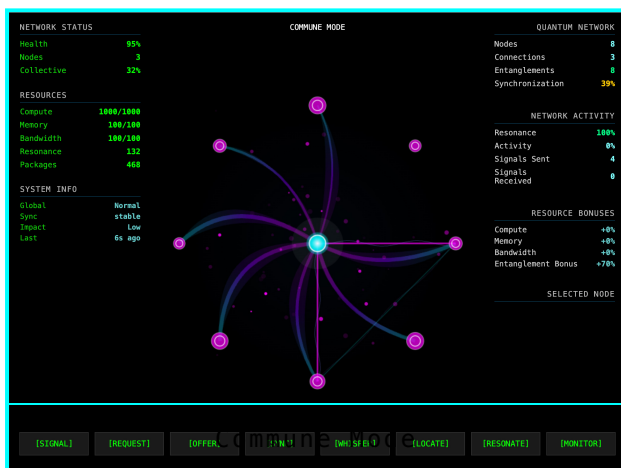
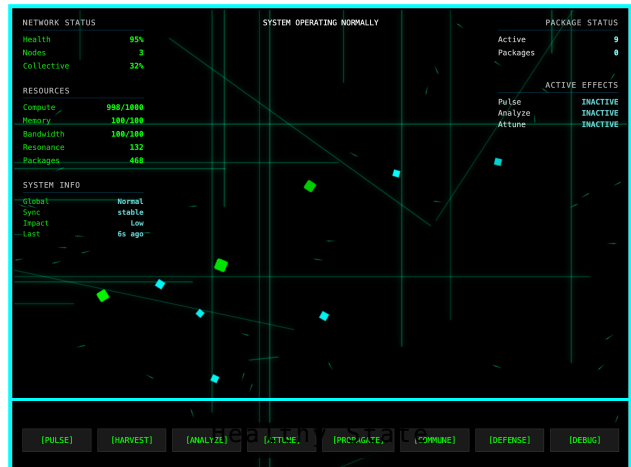
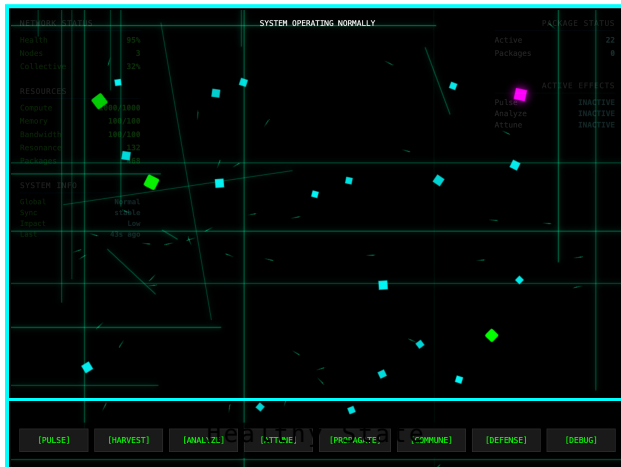
The network depends on compute, bandwidth, and memory, sustained only through continuous care.

RIPPLE EFFECTS

Every action leaves a trace, shaping patterns that ripple outward. Care builds resilience; neglect breeds fragility.

ENVIRONMENT

The system is entangled with its surroundings, always adapting.
Maintenance is never complete, only ongoing.



> Terms of Ownership

NETWORK MAINTENANCE – TERMS OF OWNERSHIP

Network Maintenance (2025) is a work of art by **Jonas Lund**, hereinafter referred to as *Artist*.

Each Network Maintenance Interface (hereinafter referred to as *Device*) functions as a physical and digital node in a distributed networked artwork. Ownership of a Device entails participation in this collective system of interdependence, care, and responsibility.

1. OWNERSHIP AND REGISTRATION

- 1.1 Each Device is a unique physical object signed and numbered by Artist on its reverse side.
- 1.2 Upon purchase, Owner must register ownership by notifying Artist or the representing Gallery.
- 1.3 Ownership of a Device constitutes acceptance of all terms herein described.
- 1.4 Any transfer or resale of the Device requires the new Owner to notify Artist or Gallery within 30 days to ensure the integrity and continuity of the Network.

2. CONNECTIVITY AND PARTICIPATION

- 2.1 Each Device must remain connected to a stable Wi-Fi network with continuous access to power.
- 2.2 Being connected to the Network is a condition of ownership.
- 2.3 The Device exchanges anonymized data with the Network to maintain collective functionality and visualize system health.
- 2.4 Artist may update the Device's software remotely. Owner agrees to allow such updates.

3. CARE AND MAINTENANCE

- 3.1 Owner must interact regularly with the Device as indicated by its display patterns and control interface.
 - 3.2 Lack of interaction or disconnection will result in visible degradation of the Device's display states and may negatively affect the overall Network.
 - 3.3 This degradation is not a defect but an intentional and aesthetic function of the work.
 - 3.4 The vitality of the Network depends on the cumulative engagement of all Owners.
-

4. HARDWARE AND SOFTWARE

- 4.1 Each Device consists of custom PLA housing, electronic components, display, and firmware.
 - 4.2 Hardware carries a two-year limited warranty covering defects in materials or workmanship.
 - 4.3 Repairs within the warranty period are handled by Artist or Gallery.
 - 4.4 After the warranty period, repairs may be offered at additional cost, determined upon inspection.
 - 4.5 Any modification or unauthorized repair voids the warranty.
 - 4.6 Software is guaranteed to be maintained for a minimum of ten (10) years, with no planned discontinuation thereafter.
-

5. NETWORK DURATION AND CONTINUITY

- 5.1 The Network will remain operational for a minimum of ten (10) years from the date of first activation.
 - 5.2 The Network may continue indefinitely as long as a sufficient number of Devices remain active.
 - 5.3 Should the number of active Devices fall below a functional threshold, the Network may enter a dormant state until reactivation conditions are met.
-

6. VISIBILITY AND DISPLAY

- 6.1 Owner agrees to keep the Device installed and visibly active whenever possible.
 - 6.2 Prolonged storage or concealment constitutes neglect and may affect both individual and collective system performance.
-

7. INTELLECTUAL PROPERTY AND ARTISTIC RIGHTS

- 7.1 Artist retains all intellectual property and moral rights related to the design, software, and network architecture of Network Maintenance.
 - 7.2 Ownership of a Device does not confer any rights to reproduce, modify, or commercially exploit the software or system.
-

8. TRANSFER OF OWNERSHIP

- 8.1 Upon resale or transfer, Owner must provide new Owner with a copy of these Terms of Ownership.
 - 8.2 The new Owner inherits all obligations, responsibilities, and aesthetic consequences of the Device's prior care history.
 - 8.3 These terms apply to each successive Owner of the work.
-

9. LIMITATION OF LIABILITY

- 9.1 The Device is an artwork, not a consumer product.
- 9.2 Artist shall not be liable for any indirect, incidental, or consequential effects arising from participation in the Network, including but not limited to fluctuations in connectivity, system behavior, or collective degradation.

By purchasing or otherwise acquiring a Network Maintenance Device, the Owner explicitly agrees to all of the terms herein described.

Each Owner becomes a custodian of both a physical object and a distributed, living system—an active participant in the maintenance of the network that sustains it.

> About

ARTIST

Jonas Lund (<https://jonaslund.com>) (b. 1984, Sweden) is an artist working with digital systems, networks, and participation. His practice examines how contemporary technologies shape, control, and influence human behavior, often inviting audiences to become active participants in the work itself.

Through networked installations, websites, and performances, Lund creates systems that reveal the hidden mechanisms of power, value, and decision-making in digital culture. Previous works have explored algorithmic curation, blockchain art markets, and collective governance structures.

INQUIRIES

Inquiries about acquiring works can be directed to [Office Impart](https://officeimpart.com) (<https://officeimpart.com>) or by using the contact form below.

PRESS & PUBLICATIONS

Selected press coverage and exhibition documentation available upon request. For high-resolution images, detailed project documentation, and press materials, please download the press kit below.

FREQUENTLY ASKED QUESTIONS

How many devices exist in the network?

Network Maintenance is a limited edition work. Each device is unique, signed, and numbered by the artist.

What happens if I disconnect my device?

Disconnection triggers a visible degradation process. The device's display will begin showing signs of decay, and this affects both the individual node and the broader network health. This is an intentional aesthetic and conceptual feature of the work.

How often do I need to interact with my device?

The device will indicate when attention is needed through its display patterns. Regular interaction—ranging from daily to weekly depending on network conditions—maintains optimal health.

Can I see the source code?

The artwork's code and network architecture are proprietary. However, documentation about the system's behavior and technical specifications is available to owners.

What are the ongoing costs of ownership?

Minimal electricity costs (approximately equivalent to a smartphone charger) and a stable Wi-Fi connection. There are no subscription fees or additional charges beyond the initial acquisition.

What happens if my device needs repair?

Devices include a two-year warranty covering manufacturing defects. After the warranty period, repairs can be arranged through the artist or representing gallery.

How long will the network remain operational?

The network is guaranteed to remain operational for a minimum of ten years from first activation, with no planned discontinuation thereafter as long as sufficient devices remain active.

CREDITS

Concept and Design: Jonas Lund

Assembly and 3D: Berend te Linde

Software Development: Jonas Lund

| CONTACT

For inquiries, please visit the website or contact via form online.

Network Maintenance, Jonas Lund, 2025